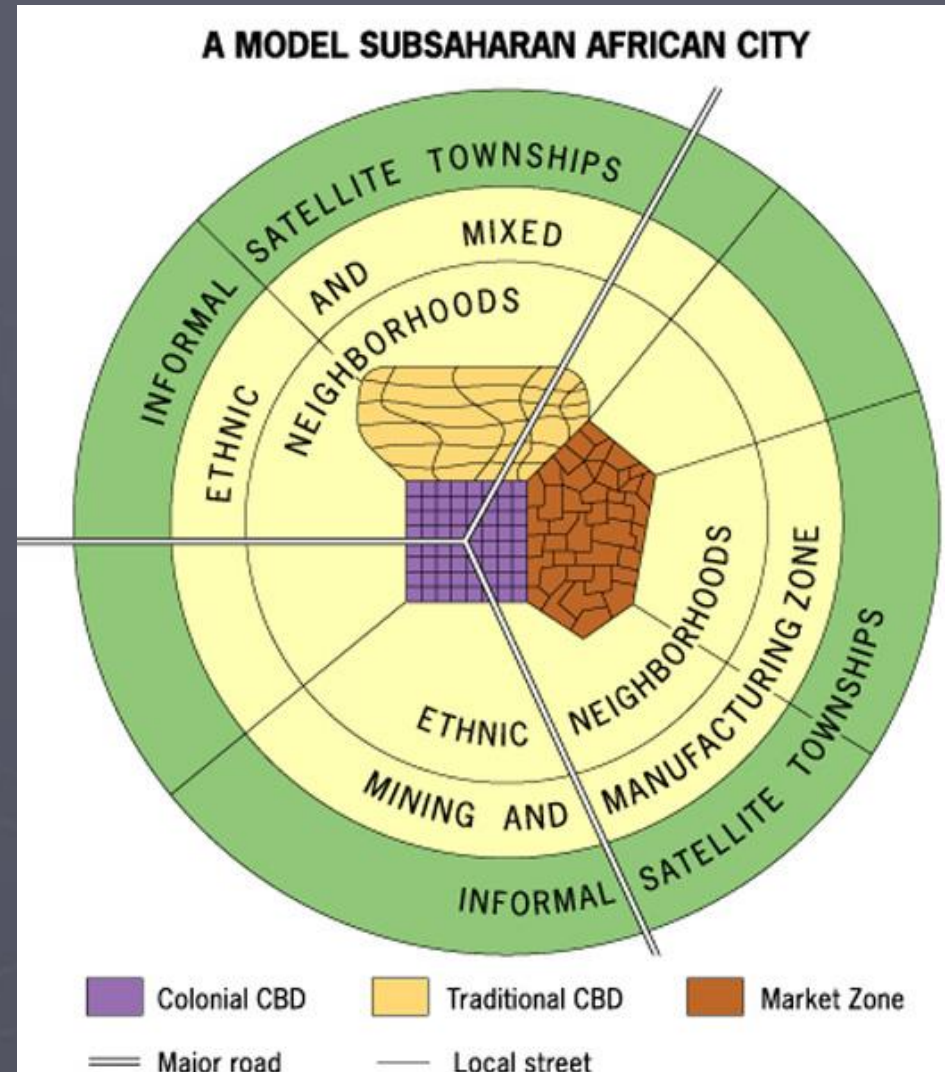


African Urban Models



Sub-Saharan Africa Model

- Developed by geographer Harm De Blij
- World Bank estimates show growing urbanization
 - 2010 – 36%
 - 2030 – 50%



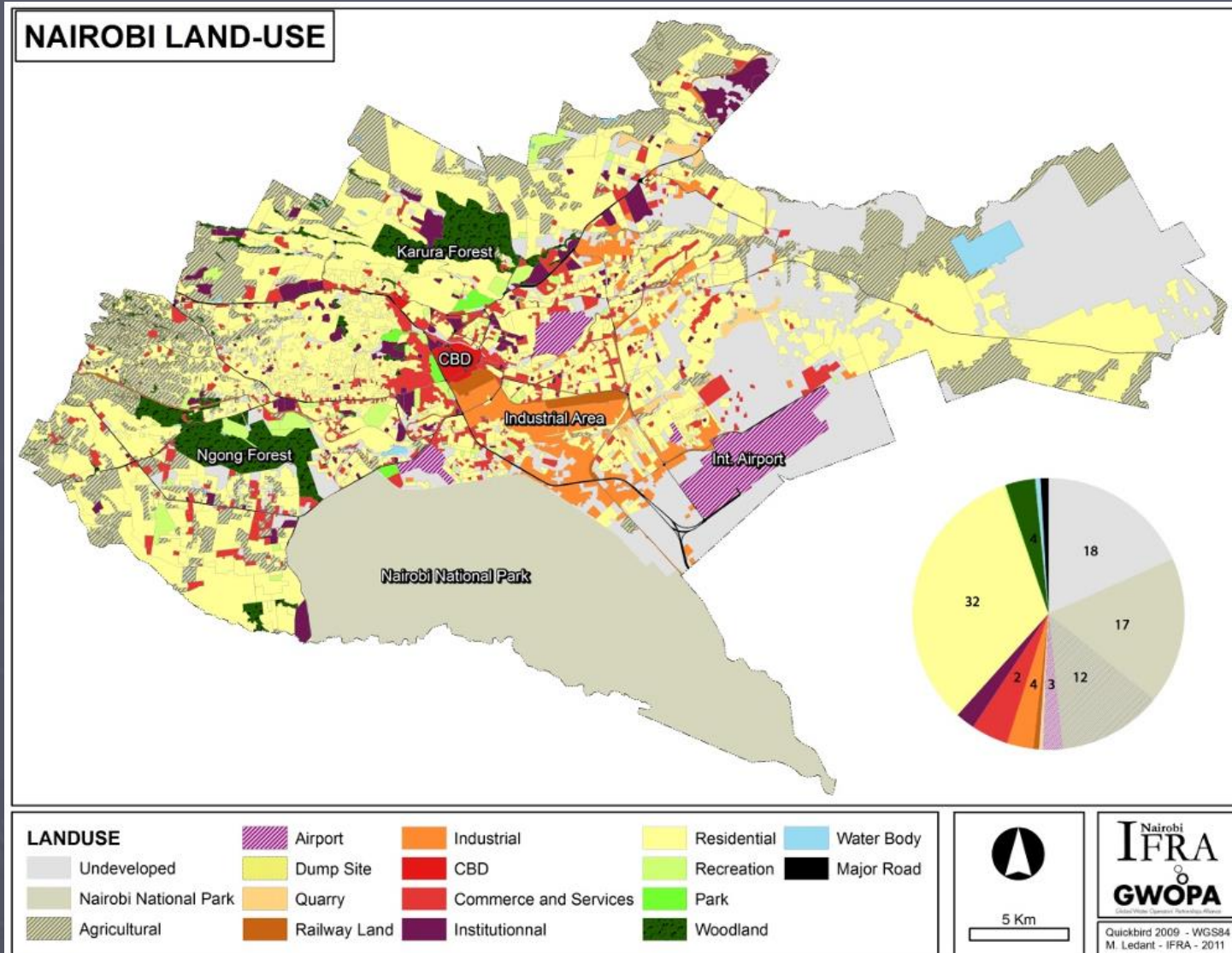
Features of Sub-Saharan Model

- Three CBDs
 - Traditional market, European colonial center, modern developing CBD
- Mining and industry on outskirts of city
 - Townships close to areas where they work
- Ethnic neighborhoods
 - Reflect tribal identities

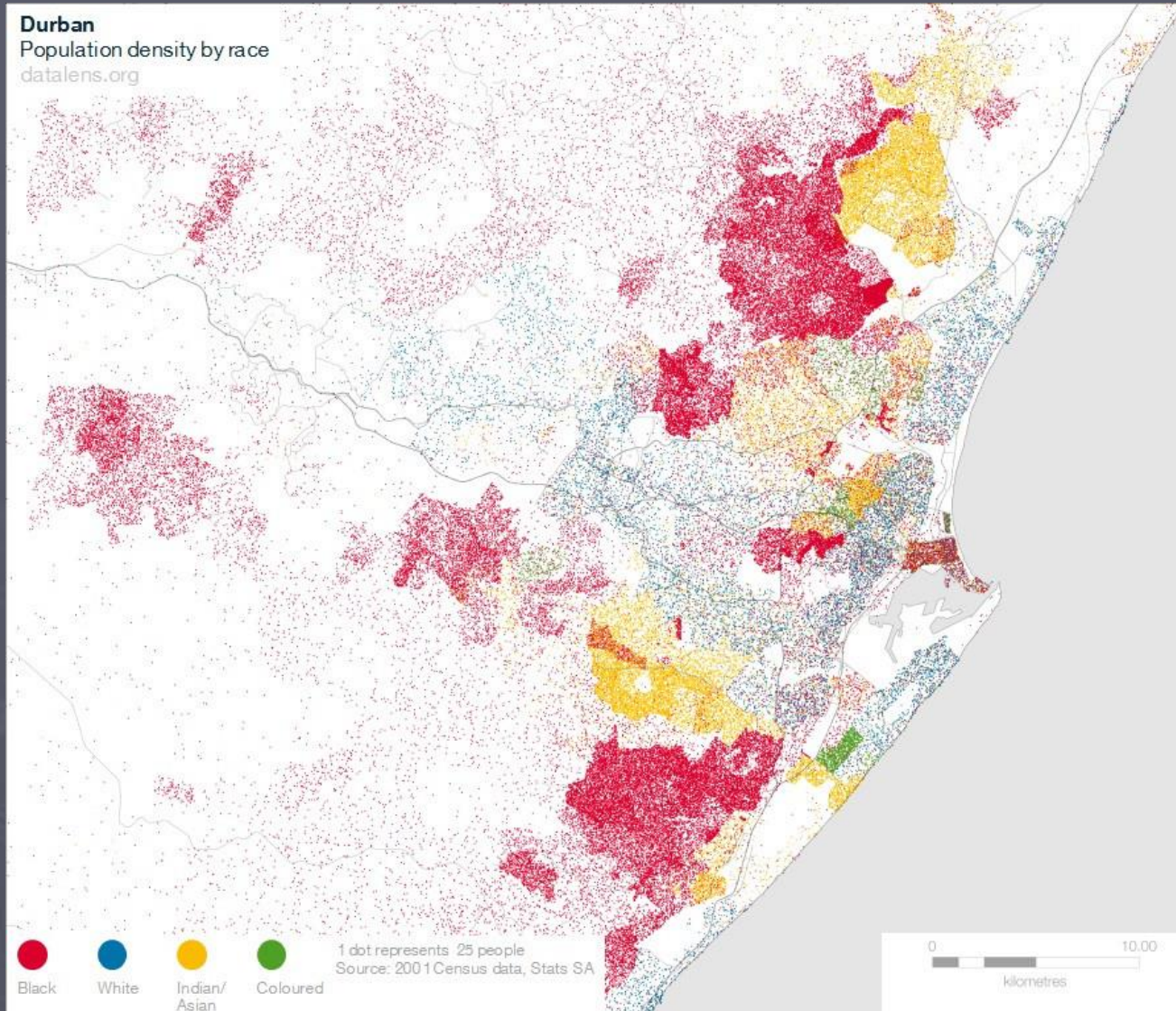
Criticism of Model

- Does not account for informal economy
- Out of date
 - Reference to Ethnoburbs as areas that are not “white”
 - Cities changing quickly
 - Desire for informal settlements to be close to wealthy
- Lack of middle class and wealthy areas

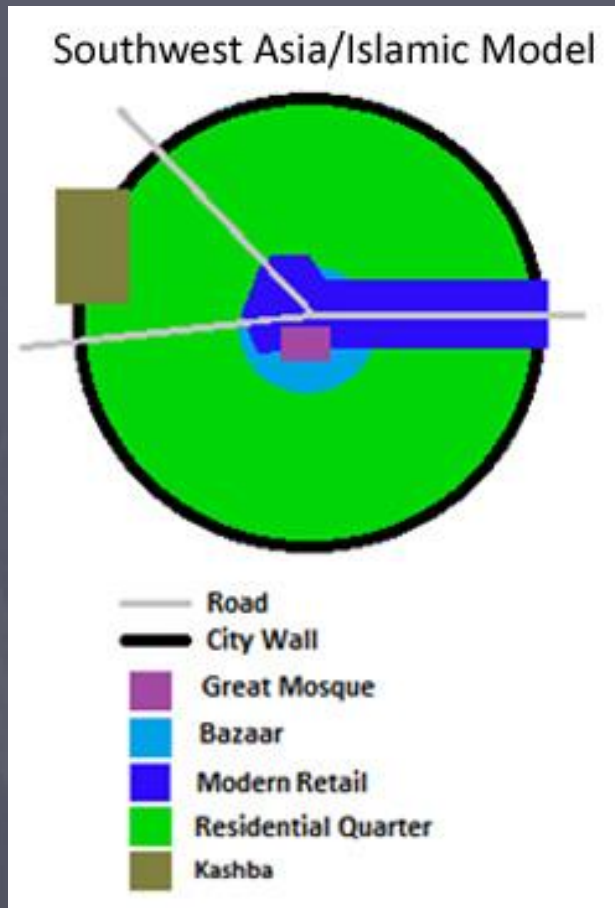
Nairobi, Kenya



Durban, South Africa



Islamic City Model



- Model based on observations of Southwest Asian cities
 - City structure diffused to other Muslim areas
- Mostly found in Islamic parts of North Africa
 - Traits can also be found in West Africa and Eastern coast of Africa

Cairo, Egypt

