



Biogeography

Map Lab: Ratite Geoinquiry

Leveled Assessment ____/4

Name: _____

Section: _____

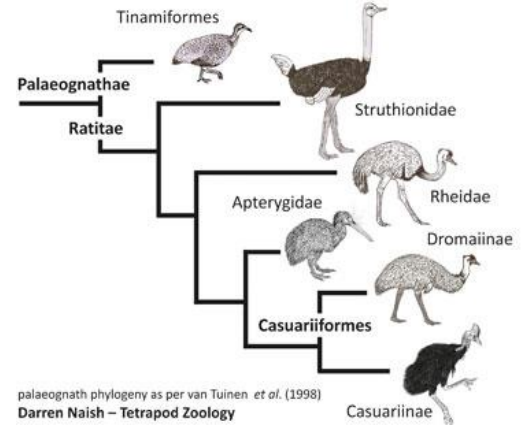
Score: ____/5

Directions: Use the maps and the information provided from the contextual information below to complete the series of questions regarding the distribution of ratites around the world. To complete the geoinquiry use the Ratite Distribution webmap (<https://arcg.is/1qD80q>)

Context: The family of Ratites includes the species of Emu, Ostrich, Cassowary, Rhea, Kiwi, Elephant Bird (extinct), and Moa (extinct). Though varying in size the species within the ratite family share the characteristic of lacking an extended keel to their sternum. The keel typically acts as an anchor for the required wing muscles for flight, as these birds lack the keel they are flightless.

Thought Questions:

1. Theorize four potential explanations for the distribution of ratites.
 - a.
 - b.
 - c.
 - d.
2. Of your explanations above which seems the most plausible? Explain your reasoning. Cite specific evidence from the map, or a related text to support your explanation. (1pt for assertion, 2 pts for explanation, 2 pts for evidence)



Assertion:

Explanation:

Evidence: