



Biogeography

Panbiogeographic Relationships

Levelled Assessment ____/4

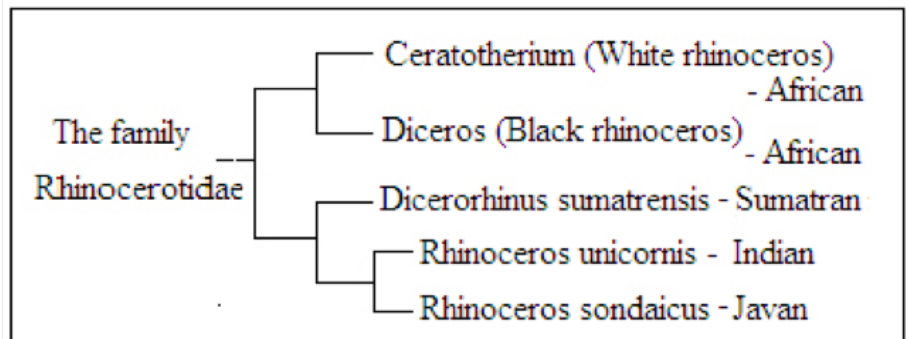
Name: _____

Section: _____

Score: ____/10

Directions: Answer the following series of questions after completing the Panbiogeographic Rhinocerotidae Map Lab

1. Write in the url of your shared webmap in the space provided: _____ (5pts)
2. Based on your map which two species seem to have the most similar evolutionary paths? How did you determine this?
3. Explain the placement of nodes and baselines when doing a panbiogeography analysis.
4. How closely does your map match up with the cladogram of the Rhinocerotidae family? Does their spatial distribution match up with their genetic relation? Explain



5. What did you find difficult about this activity?
6. How was this lesson helpful in understanding the concepts of biogeography?