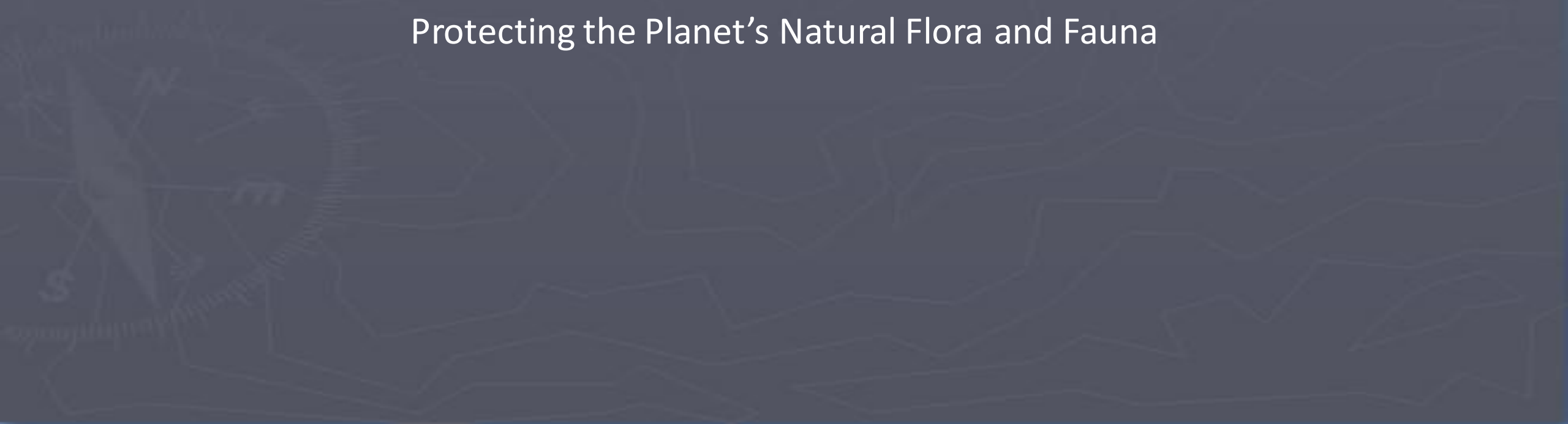


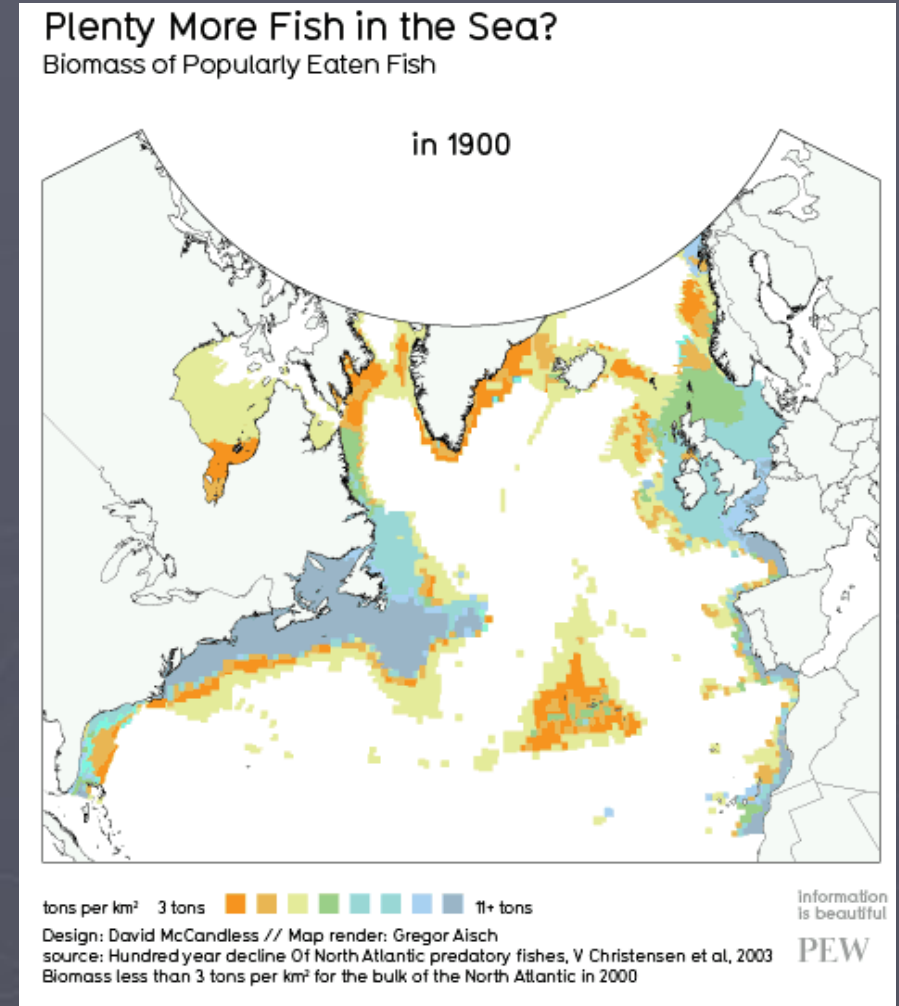
Wildlife Management

Protecting the Planet's Natural Flora and Fauna



Issues Related to Wildlife Management

- Poaching/Out of Season Hunting
- Exotic Animal Trade
- Invasive Species
- Overfishing/Overhunting
- Managing Resources within Territorial and International Waters
- Health and preventing Disease
- Educating the Public
- Managing Human/Wildlife Interactions



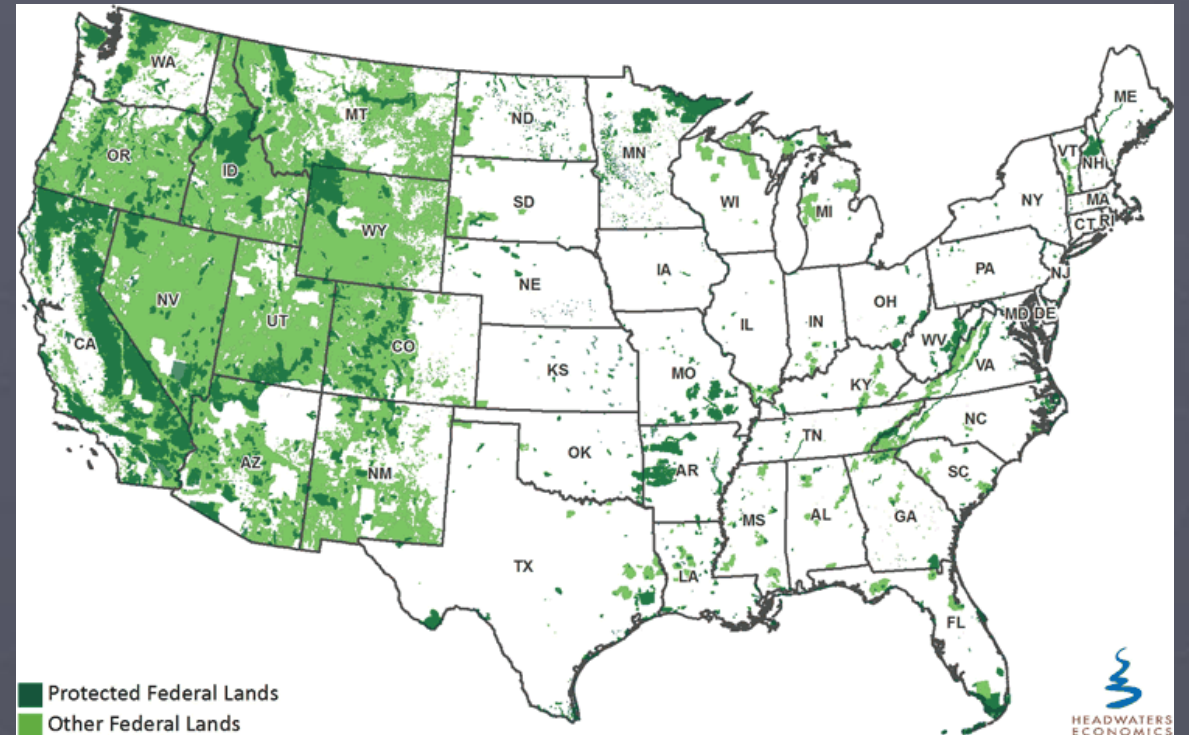
Natural Resource Departments

- Governments maintain departments responsible for conservation of plants and animals
 - Track and estimate particular species
 - Use of geospatial technologies and tracking devices to keep track of animals
 - Establish and enforce harvesting quotas
 - Oversee management programs
 - Respond to Natural Disasters
 - Fires, floods, seismic activity, etc...



Government Agencies

- Governments maintain different departments to understand and protect their natural resources
 - Ex. Bureau of Land Management, National Oceanographic and Atmospheric Administration, Environmental Protection Agency, National Park Service, etc...
- Governments develop policy on resources
 - Laws that determine use of natural resources



National Parks

- Areas set aside by governments as protected reserves
 - Very strict regulations regarding use of natural resources
 - Set aside for their natural beauty, abundance of wildlife, or presence of endangered species
 - Allow for limited interaction with nature for the public



Roles of Zoos and Aquariums

- Rehabilitation
 - Some zoos and aquariums specialize in the rehabilitation of animals with the goal of reintroducing them into the wild
- Research
 - Zoos and Aquariums provide valuable insight into animal's habits allowing the formulation of conservation programs
- Breeding Programs
 - Critically endangered animals are attempted to be bred in captivity in order to try to help numbers recover



Roles of NGOs

- Support the conservation and protection of particular species
- Work with, or against, governments in protecting natural areas or animals
- Educate about issues related to nature

