

# Art of The Renaissance



# Modern Florence

Copyright © 2000 by mzanig@compuserve.com





# Florence in time of Renaissance



# The Mona Lisa

## Leonardo da Vinci

Commissioned by Francesco del  
Giocondo

Located in the Louve





# The Birth of Venus – Botticelli

Commissioned by Lorenzo di Pierfrancesco de' Medici  
(Cousin of Lorenzo the Magnificent)





# The School of Athens – Raphael

Commissioned by Vatican (Located in Apostolic Palace)





- Heraclitus with the features of Michelangelo



- Plato and Aristotle





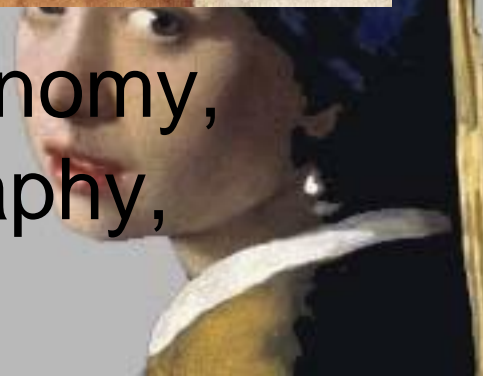
- Euclid representing the importance of Geometry







- Zoroaster representing astronomy, Ptolemy representing geography, and Raphael



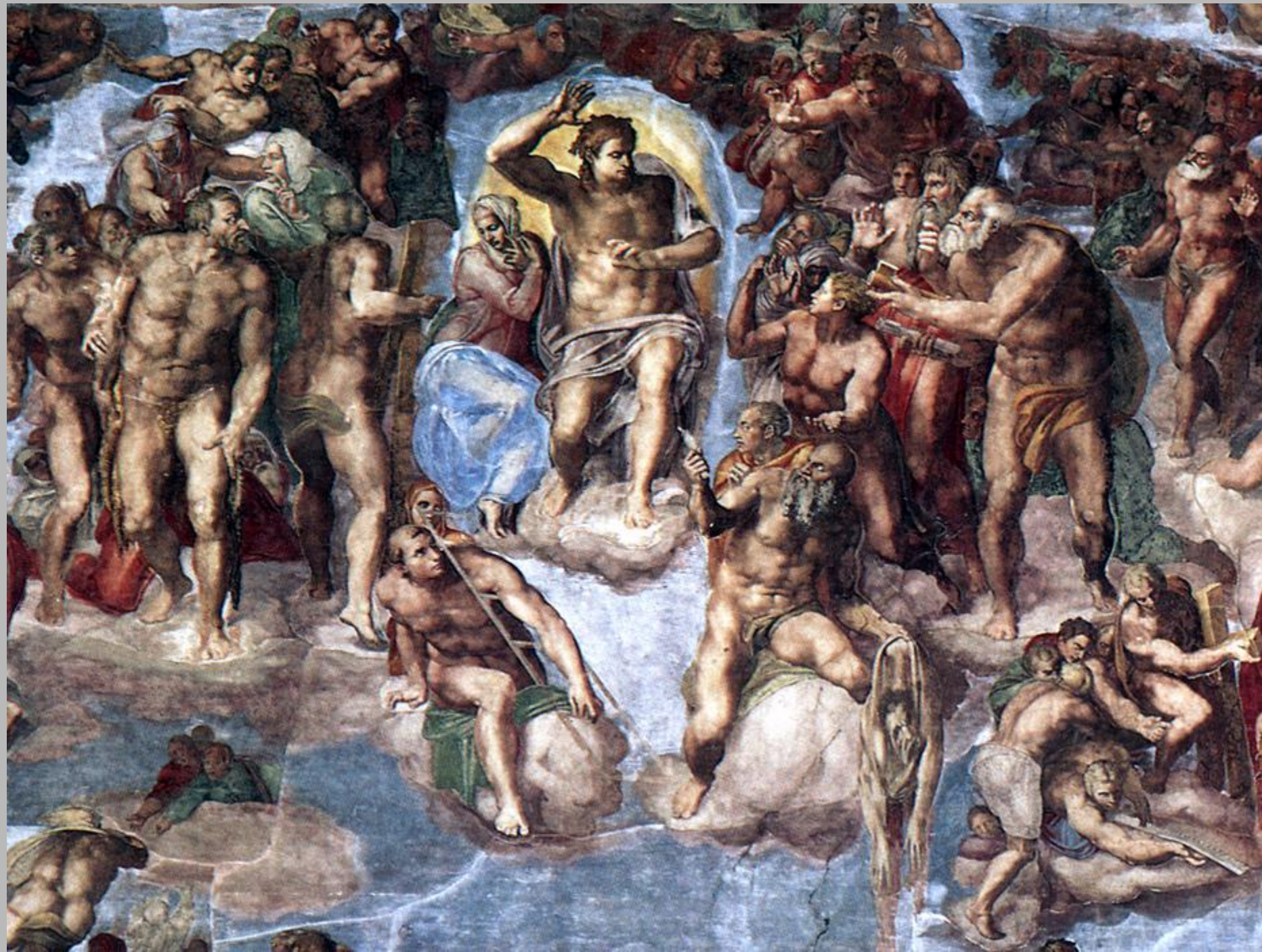


# The Last Judgment Michelangelo

Commissioned by Pope Clement VII  
Located on Alter Wall of Sistine Chapel





















# The Creation of Adam

## Michelangelo

Commissioned by Pope Julius II  
Located on ceiling of Sistine Chapel









# Piazza della Signoria and the Palazzo Vecchio

Florence City Hall

Built by the Medici Family













# The Loggia dei Lanzi - Florence







- The Loggia – Originally a forum but turned into outdoor sculpture garden by the Medici family





# Perseus with the Head of Medusa

Benvenuto Cellini

Commissioned by Cosimo de'  
Medici













# Basilica de Sante Croce

Located in Florence

Technically Gothic

Tomb of Machiavelli, Galileo,  
and Michelangelo







# The Duomo – Florence

Started during Middle Ages  
Dome completed by  
Brunelleschi































# The Baptistry

Located in Florence  
Built in 10<sup>th</sup> Century  
Dome completed by  
Brunelleschi









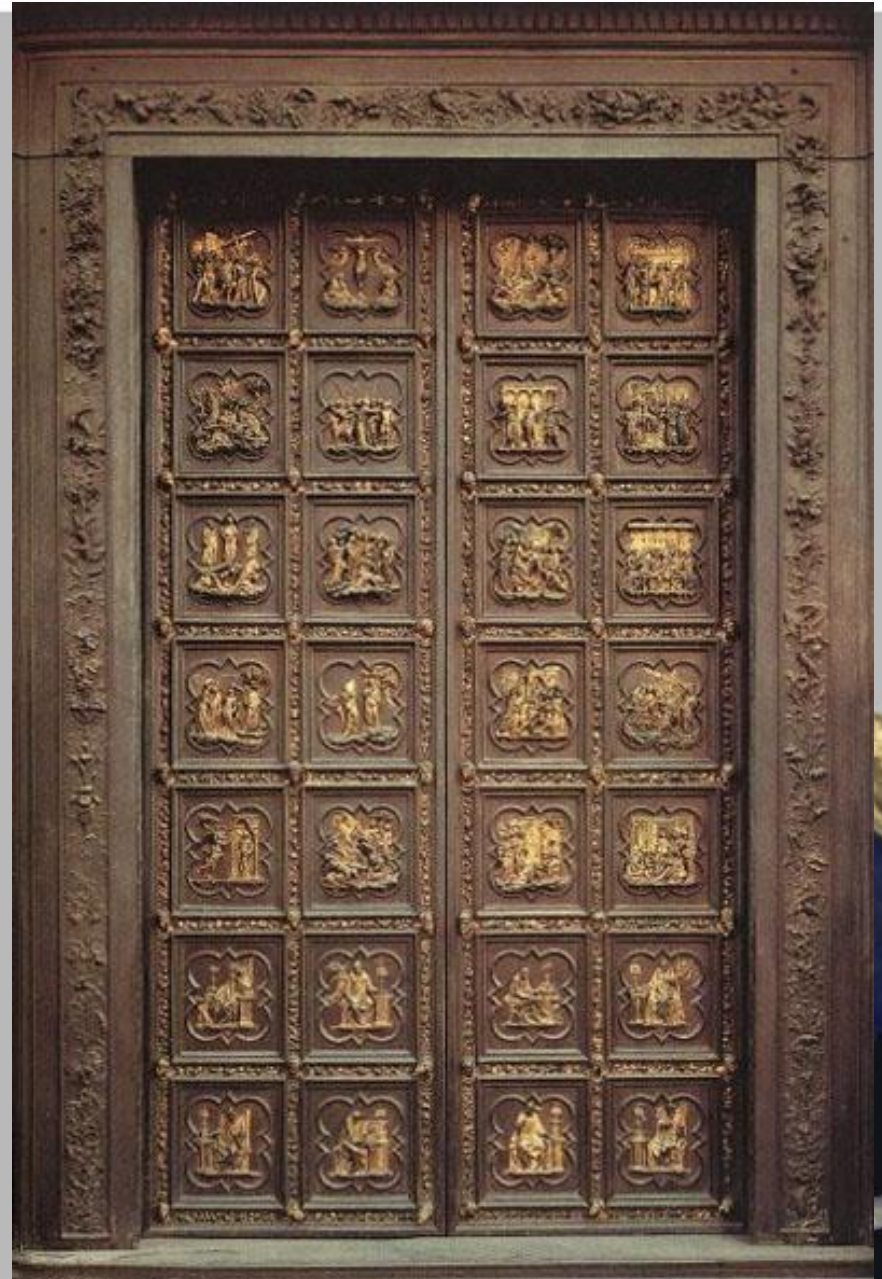




# The North Door of the Baptistry

Created by Ghiberti

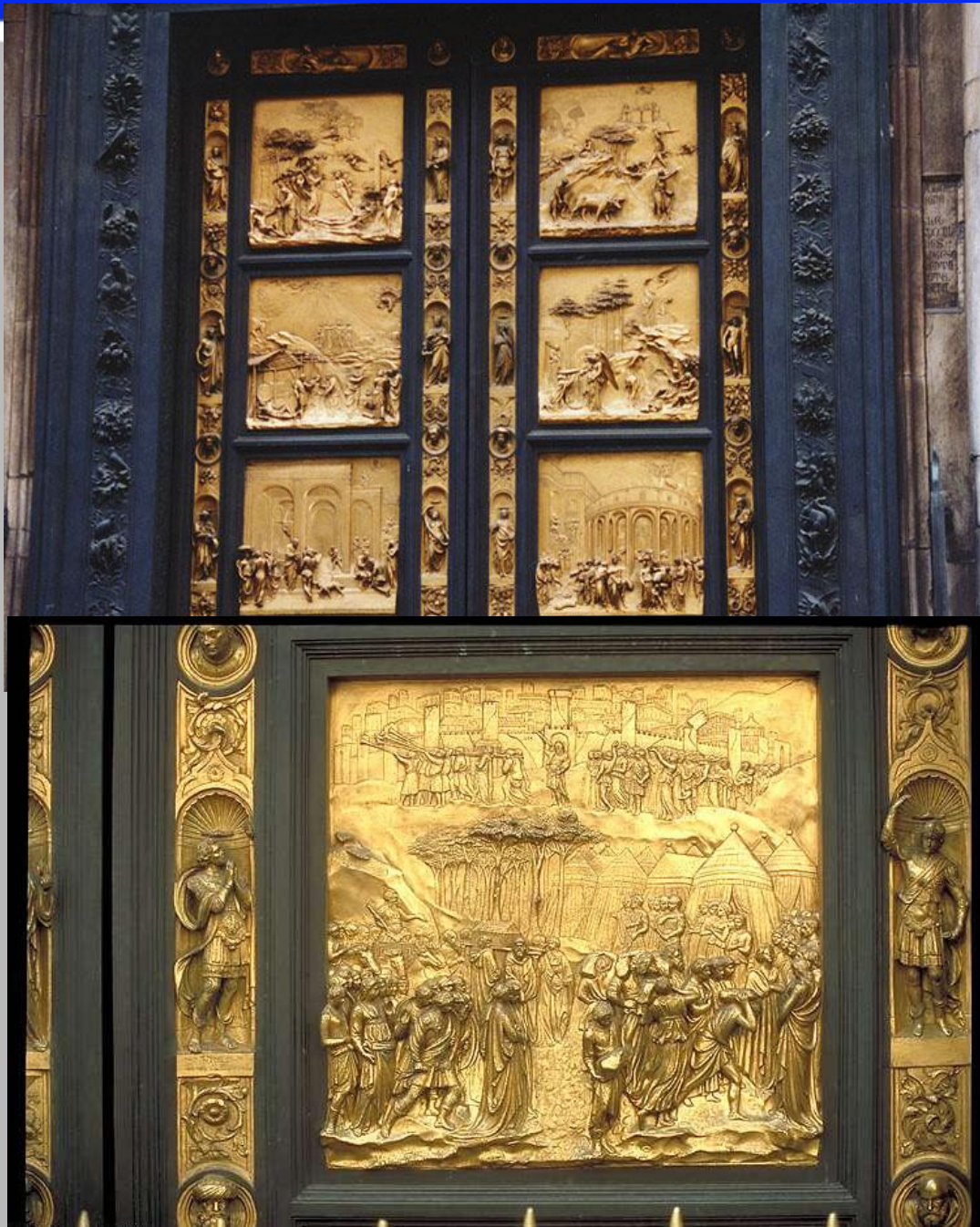
Dome completed by  
Brunelleschi





# The East Door of the Baptistery

AKA the Gates of Paradise  
Created by Ghiberti









# David

Created by Michelangelo

1501-1504

Commissioned by Cathedral of  
Florence















# The Pieta

Created by Michelangelo  
at age of 24!

1498-1500

Located in St. Peter's Basilica









# St. Peter's Basilica

Commissioned by Pope Julius II  
1506 - 1626

